

MODULE COMBINATIONS						DIMENSIONAL CHART								
SCALE SIZE	FIRST REF "D" DIM	MIDDLE REF "E" DIM	MIDDLE REF "F" DIM	MIDDLE REF "G" DIM	TERMINAL REF "H" DIM	"A" FDN LENGTH	"B" OVERALL LENGTH	"C"	"D"	"E"	"F"	"G"	"H"	VARIANCE FROM STD LENGTH
75'	15'	15'	15'	15'	15'	75' 0 1/2"	74' 11 1/4"	74' 4 1/2"	14'-10 1/2"	14'-10 1/2"	14'-10 1/2"	14'-10 1/2"	14'-10 1/2"	NONE
80'	17.5'	15'	15'	15'	17.5'	80' 0 1/2"	79' 11 1/4"	79' 4 1/2"	17'-4 1/2"	14'-10 1/2"	14'-10 1/2"	14'-10 1/2"	17'-4 1/2"	NONE
82.5'	17.5'	15'	17.5'	15'	17.5'	82' 6 1/2"	82' 5 1/4"	81' 10 1/2"	17'-4 1/2"	14'-10 1/2"	17'-4 1/2"	14'-10 1/2"	17'-4 1/2"	NONE
85'	17.5'	17.5'	15'	17.5'	17.5'	85' 0 1/2"	84' 11 1/4"	84' 4 1/2"	17'-4 1/2"	17'-4 1/2"	14'-10 1/2"	17'-4 1/2"	17'-4 1/2"	NONE
87.5'	17.5'	17.5'	17.5'	17.5'	17.5'	87' 6 1/2"	87' 5 1/4"	86' 10 1/2"	17'-4 1/2"	17'-4 1/2"	17'-4 1/2"	17'-4 1/2"	17'-4 1/2"	NONE

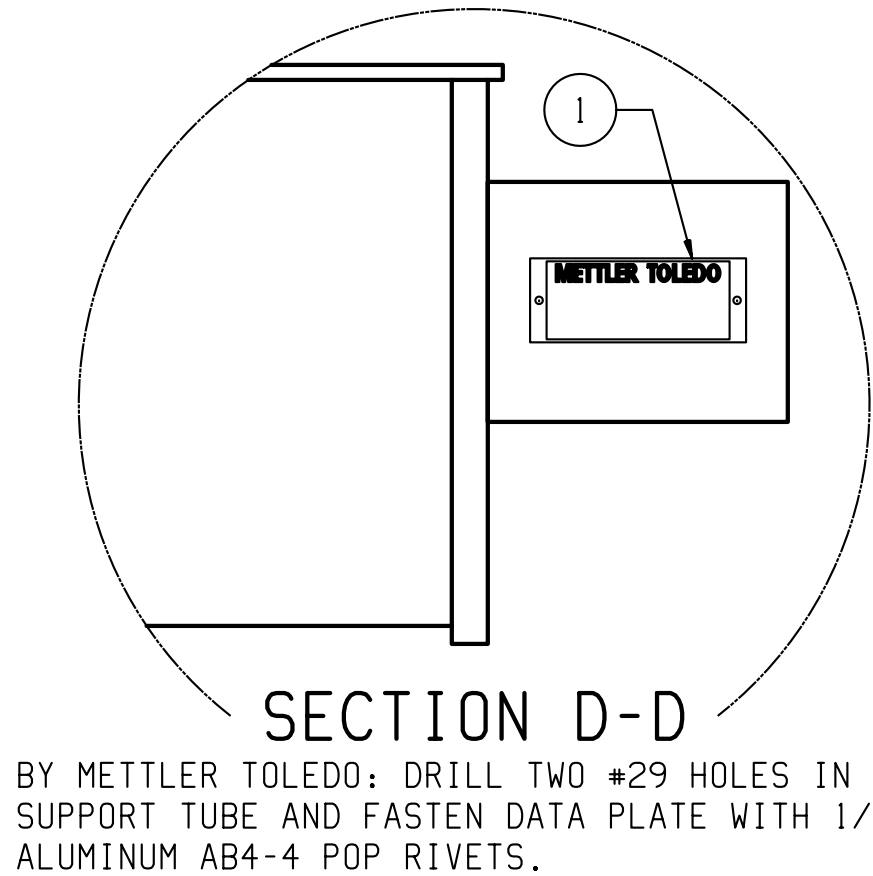
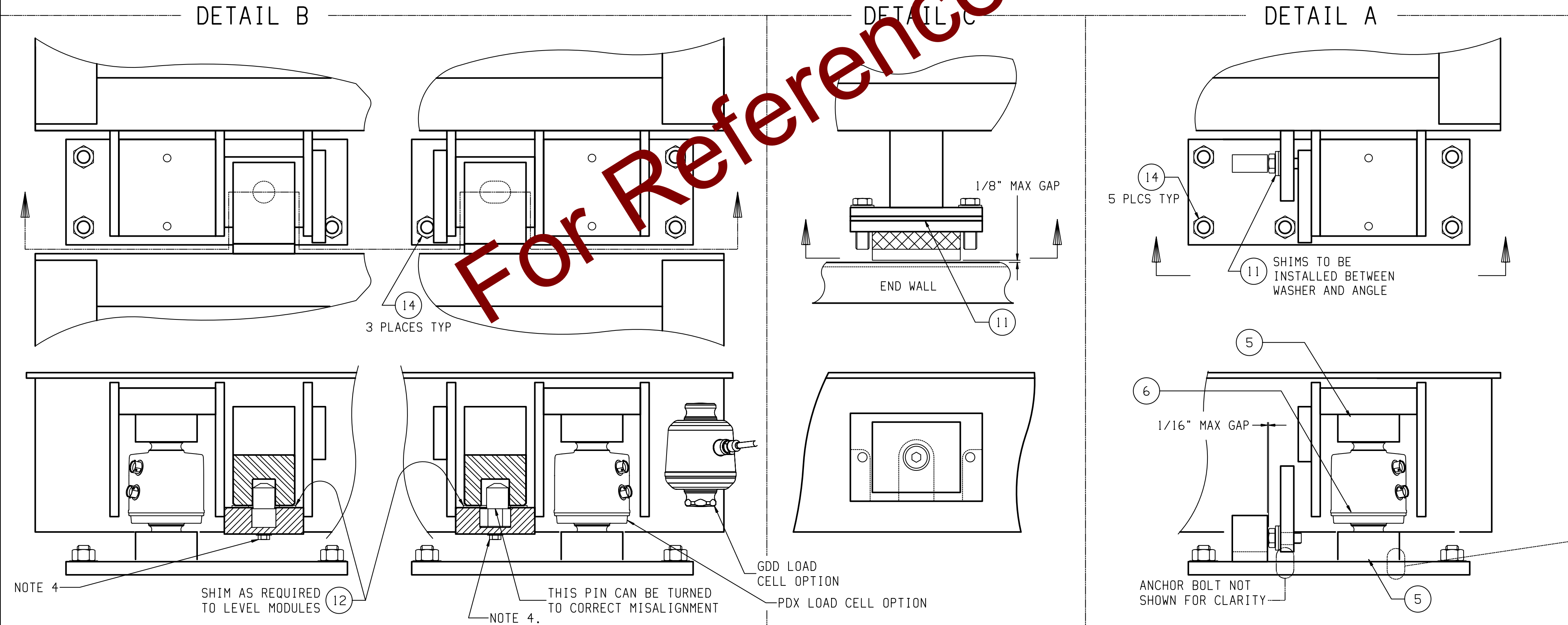
NOTES:

- 1a. FOUNDATION LENGTH DIMENSION SHOWN IS NOMINAL. ACTUAL TOLERANCE IS -0" +1". (DIMENSION "A") END BUMPER PLATES ARE REQUIRED. FLUSH CAST PLATES WITH NON-SHRINK EPOXY GROUT. IF NOT ALREADY PRESENT. SEE FOUNDATION DRAWINGS FOR DETAILS.
- 1b. SURFACE MOUNTING OF BUMPER PLATES TO THE END WALL WILL INCREASE END GAPS AND IS NOT RECOMMENDED. DEBRIS BUILD-UP WILL BE ACCELERATED IN MOST APPLICATIONS.
- 1c. IF SURFACE MOUNTED BUMPER PLATES ARE USED, THE FOUNDATION LENGTH ("A") SHOWN IN THE CONFIGURATION TABLE WILL BE SHORTER THAN THE ACTUAL FOUNDATION OPENING.
- EXAMPLE: TWO 3/4" SURFACE MOUNTED PLATES ARE USED AS BUMPER TARGETS. THE EXISTING FOUNDATION OPENING WILL BE 1.5" GREATER THAN FOUNDATION LENGTH "A" GIVEN IN THE TABLE. EACH END GAP WILL INCREASE FROM A NOMINAL 1" TO 1 3/4".
2. APPLY LOCTITE #242 TO ALL GAP COVER BOLTS.
3. IF CABLE CONNECTORS BECOME CONTAMINATED, REMOVE CONTAMINANTS WITH PROVIDED CONNECTOR CLEANER.
4. APPLY LOCTITE #242 TO COUPLER PIN BOLTS AND TORQUE 1/3 TURN PAST SNUG. (ONLY IF COUPLER PINS ARE REMOVED.)

IMPORTANT:
THE INTERIOR SURFACE OF ALL LOAD CELL RECEIVERS (BOTH TOP AND BOTTOM) MUST BE LUBRICATED WITH RECEIVER GREASE DURING CELL INSTALLATION.

NOTES FOR HAZARDOUS AREA WIRING:

H1. THE HAZARDOUS AREA WIRING AND LIGHTNING PROTECTION KIT IS SPECIFIC FOR THE SUPPLY VOLTAGE AND THE INDICATOR USED. IT MUST BE INCLUDED FOR INTRINSICALLY SAFE COMPLIANCE IN HAZARDOUS LOCATIONS.



15	1	68004258	MTX CLEANER, CONNECTOR
14	44	68004325	ANCHOR BOLT EXPANSION 3/4-10 x 5.5
13	1	30236781	INSTALL KOP VTX2X1 FLUIDS 5-7 MODS
12	2	30465416	COUPLING KOP 7560
11	1	30465415	CHECKING KOP 7560
10	1	61091706 30352601	KOP PDX WIRING 12LC D2J9 KOP GDD WIRING VTX2X1/7560 5-MOD
9	1	TERM	STANDARD TERM MODULE
8	3	MID	STANDARD MIDDLE MODULE
7	1	FIRST	STANDARD FIRST MODULE
6	12	42904891 72236271	LOAD CELL, PDX, 50+ LOAD CELL, GDD, 30+
5	6	30465438 30465439	LOAD CELL ASSEMBLY 7560 KOP PDX 2LC LOAD CELL ASSEMBLY 7560 KOP GDD 2LC
4	2	68004241	BUMPER BASEPLATE RIGHT
3	2	68004240	BUMPER BASEPLATE LEFT
2	8	68004239	BASEPLATE
1	1	61071325	DATA PLATE

ITEM	QTY	PART NUMBER	DESCRIPTION
MAJOR BILL OF MATERIAL			
REV	CHANGE	BY	DATE
A	ADDED GDD AND VC KOP	NLD	02/26/18
SCALE .25		DATE 04/14/16	
DRN KRS		APPD ADF	
TITLE		7560SD GLO PDX/GDD 5-MOD	
UNLESS OTHERWISE SPECIFIED, ALL DIMENSIONS ARE IN INCHES, AND DIMENSIONAL TOLERANCES ARE:		THIS PRINT IS FURNISHED WITH THE UNDERSTANDING THAT THE ESSENCE THEREOF WILL NOT BE REPRODUCED IN WHOLE OR IN PART WITHOUT WRITTEN AUTHORIZATION OF METTLER-TOLEDO, LLC. ALL DESIGNS ARE THE PROPERTY OF METTLER-TOLEDO, LLC AND WILL BE PROTECTED BY PATENTS.	
FRACTIONAL	DECIMAL	ANGULAR	
±1/32	.XX ±.02	±.5°	
	.XXX ±.005		
61808496			REV A